

Incredible
speed

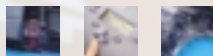
Gerber

enVision

picture perfect precision . record-breaking speed

Gerber

enVisionTM



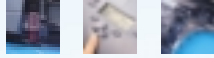
s p r o c k e t e d p l o t t e r s

*picture perfect
precision*



extreme

Accuracy



s p r o c k e t e d p l o t t e r s

choose the sprocket feed plotter that's right for you

A Gerber enVision plotter is the ultimate workhorse — rugged, reliable, accurate, and fast. When it comes to precision and unparalleled performance, Gerber plotters are the benchmark against which all others are measured.



If your current or future workload includes...

- ... Text-intensive signs
- ... Precision-cut intricate graphics
- ... Highly repetitive work
- ... Time-sensitive, short-run graphics
- ... Long signs
- ... Difficult-to-cut materials
- ... Color output
- ... Fleet graphics

Then accuracy, repeatability, fast set-up, and unattended long-run performance are critical.

A Gerber sprocket-feed plotter is the answer.

Choose **enVision 375**, the 15" tabletop model, or **enVision 750**, the 30" floor-standing version. Designed for the rigors of everyday use, these workhorse machines offer the ultimate in durability. Both run on Gerber software, as well as most popular design software platforms supporting HP-GL™. Both offer ultra-precise tracking and easy material alignment. And both are the fastest sprocket-feed plotters currently on the market!

enVision: the perfect solution.

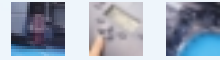
Incredible Performance

Cutting speed, on diagonal:
50 inches/sec (1250 mm/sec)
Cutting speed, on axis:
36 inches/sec (915 mm/sec)

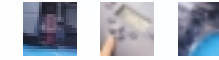
Replaceable Cutting Strip

Provides a reliable cutting surface that can be replaced in a snap! No waiting, no downtime, no outside service expense.





s p r o c k e t e d p l o t t e r s



s p r o c k e t e d p l o t t e r s

the powerhouse plotters that will change the way you work

The Gerber enVision sprocket feed plotters are full of innovative features that will drive productivity today — the key to greater profits tomorrow. Your plotter is one of the most important choices you face, as you grow your business.



The Gerber enVision is the ultimate partner for the GERBER EDGE® and EDGE® 2 — phenomenal color graphics with unsurpassed color-to-color and print-to-cut registration at lightning speed! Create the ultimate digital production system: the GERBER EDGE 2 and enVision 375 — the fastest 15" sprocket plotter around!



- ...| **high performance servo-drive**
Continuous, automatic system monitoring assures a precision cut at every position, at any velocity. With the enVision, you're always in control, always assured of maximum performance.
- ...| **extreme accuracy for unattended operation**
The enVision's superior sprocket-feed technology ensures positive material tracking for outstanding results — no slipping, no skewing, no waste, and no guesswork. Gerber enVision plotters perform so reliably unattended, you can run lengthy text or graphics after hours and increase your productivity. Just set up and walk away!
- ...| **incredible performance**
With an enVision plotter on your team, you can save time and money. The enVision's state-of-the-art sprocket plotter technology includes advanced features, Gerber quality, awesome 3G acceleration, and 36 inches/second output speed.
- ...| **automatic tool settings**
Intuitive operations require minimal training and ensure maximum productivity. Tool speed, force, acceleration, and blade offset compensation are set automatically when you specify your material at the plotter or from Gerber software. Settings are displayed on an easy-to-read control panel and can be stored for convenient recall.



User Friendly Control Panel

Pre-programmed settings plus the ability to create and save custom tool settings for other materials. Just make your selection and you're ready to go! No guesswork, and no errors.

Superior Bail/Roller System

Keeps even difficult-to-cut materials under your complete control, maintaining position, eliminating shifting and ensuring optimal tracking.



Easy Material Loading

Advanced "X-Axis Homing" feature brings the 3-pin set-up to loading position automatically. You're up and running in no time.

- ...| **pause, view and recovery**
Makes running your jobs easier and more cost-effective than ever before — saving valuable time and decreasing material waste. While your job is cutting, you can quickly check cut quality or job progress, perform test weeding, or modify force, speed and acceleration parameters. Just "pause" the job, then move the cutting head and material. "Resume" and the head returns to its exact last position and completes the job with absolutely no loss of data.
- ...| **cut, pounce, and pen functions**
The versatility you need to handle every job. With 30°, 45° and 60° blades and the power to precisely cut an extensive variety of materials, you're ready for anything!
- ...| **easily downloaded firmware upgrades**
Implement the latest system upgrades and enhancements yourself — from your own computer. No need to take your plotter out of service.

Works With Your System

The enVision is part of Gerber's Matched Technology System™ — hardware, software and materials designed to deliver the optimum results you'd expect from the industry's innovation leader. The enVision also works with other software that drive HP-GL plotters.





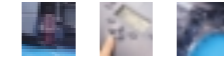
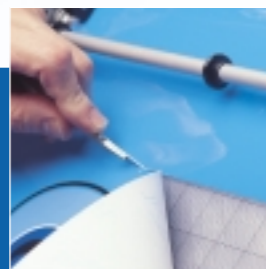
s p r o c k e t e d p l o t t e r s

enVision 375 and 750 specifications



	enVision 375	enVision 750
Material Width	15" (381 mm)	30" (762 mm)
Cutting Width	13.25" (337 mm)	27.25" (692 mm)
Max. Media Thickness	.045" (1.1 mm)	.045" (1.1 mm)
Drive Technology	Sprocket Feed	Sprocket Feed
Cutting Technology	Swivel Knife	Swivel Knife
Mechanical Resolution	.0002" (0.005 mm)	.0002" (0.005 mm)
Knife Options	30, 45, 60 degree	30, 45, 60 degree
Maximum On-Axis Speed	36 ips	36 ips
...On Diagonal Speed	50 ips (1250 mm/s)	50 ips (1250 mm/s)
Maximum Acceleration	3G	3G
Knife Cycle Speed	40 up/down cycles per sec.	40 up/down cycles per sec.
Cutting Pressure Range	0.0 oz. - 16 oz. (0g-454g)	0.0 oz. - 16 oz. (0g-454g)
Interface	RS - 232C	RS - 232C
Input Buffer	250 Kilobytes	250 Kilobytes
Stand	Desktop	Standard
Pounce	Yes (with Optional Tool)	Yes (with Optional Tool)
Dimensions (Unboxed)	29"L x 11"W x 14"H (740 mm x 280 mm x 360 mm)	38.5"L x 26"W x 48"H (incl. stand) (980 mm x 660 mm x 1220 mm)
Weight (unboxed)	60 lb (27 kg)	107 lb (50 kg)
Power Requirements	100 - 230 Volts 47/63 Hz	100 - 230 Volts 47/63 Hz
Software Command Set	GSP-GL or HP-GL2 Subset	GSP-GL or HP-GL2 Subset
Vector Look Ahead	Yes	Yes
Curve & Arc Smoothing	Yes	Yes
Test Plot Possibility	Yes	Yes
Test Cut Possibility	Yes	Yes
Replot Function	Up to 9,999	Up to 9,999
Pens	HP Compatible	HP Compatible

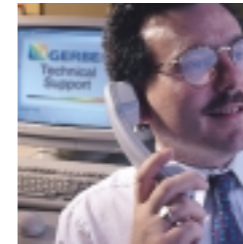
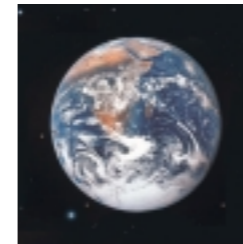
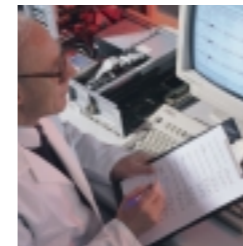
Built-in Cutting Mat
Allows added versatility
to cut completed jobs
quick and neatly.



s p r o c k e t e d p l o t t e r s

Gerber means world class support

Count on your Gerber distributor for project-critical information on applications, capabilities, maintenance, and upgrades. Support is just a phone call away. All from Gerber — the first name in cutting plotters.



... **nobody understands plotters better than Gerber**

For over fifty years, our technology has shaped every major industry — electronics, aerospace, automotive, optical, apparel, printing, metalworking, woodworking, graphic arts, and sign making.

... **impressive resources**

With over 900 global patents, a worldwide distribution network, and a massive ongoing investment in R&D, Gerber remains at the forefront. Why? Our ever-expanding array of precision products combines cutting edge technology with the expressed needs and requirements of professionals just like you.

... **unparalleled support**

Gerber and its distributor network are renowned for customer support. Installation, Application, and Field Service Specialists know everything there is to know about your plotter — and its profit potential for your business. Our team is your direct line to the latest on operations, software, new materials, and optimizing performance in your shop.

If you're looking for a plotter that can make your business more productive and more profitable — look no further than Gerber or your nearest authorized Gerber distributor.

Gerber Set the Standards for Others to Follow

- Innovative products
- Outstanding build quality
- Unrivaled commitment to customer care

GERBER
SCIENTIFIC PRODUCTS
A Gerber Scientific Company

83 Gerber Road, South Windsor, CT 06074 USA
Phone (800) 222-7446 or (860) 643-1515
Fax (860) 648-8595
www.gspinc.com

© 2002 Gerber Scientific Products, Inc.

P72499A

HP-GL is a trademark of Hewlett-Packard Corporation

