

# what are **you** waiting for?



SPEED



QUALITY



VERSATILITY



DURABILITY



The award-winning Pro II EX Series

 **Roland**



## Feel Free to Go Uncoated

EX delivers Roland quality on UNCOATED media.

With the SOLJET Pro II EX Series, you can print stunning graphics directly onto a wide range of economical media – including both coated and uncoated substrates – without harmful fumes or expensive ventilation systems! This marks a major breakthrough in profitable everyday production. Our advanced Eco-SOL INK and specially designed electronic systems that control internally mounted heating elements deliver brilliant, photorealistic graphics that are water, scratch and UV resistant up to 3 years outdoors without lamination. The new mild solvent ink is safe to use, virtually odor free, and delivers an average ink running cost as low as 21¢ per square foot.

### **Roland Certified Media. The perfect partner for the Pro II.**

If you want to get the most out of your Roland printer, make sure you begin by using our high-performance media. Why? Because when you use Roland media, you have our assurance that the media has been carefully tested, profiled and certified to provide accurate and consistent print results every time. We offer a wide range of media, including fine art papers and artist's canvas, backlit film, PET film, matte and gloss papers, Tyvek®, banner, adhesive-backed vinyl, polysilk cloth and more. Every one has been optimized for the various print speeds and capabilities of Roland printers, taking full advantage of the superior performance of our unique mild solvent, dye, and pigment ink sets.

### **Eco-SOL Media. Economical performance from the EX Series.**

Carefully tested and profiled, Eco-SOL Media ensures that EX users get quality print results on uncoated media. The competitively priced Eco-SOL Media lineup includes scrim banner materials as well as a wide variety of glossy and matte calendered vinyls with permanent or removable adhesive. Your choices also include premium cast vinyls, clear vinyls, view-through vinyls, and translucent media.

Best of all, the SOLJET EX provides unrivaled versatility by allowing you to print one job on uncoated media and the next on fine art paper or film.

It's enough to make you stand up and cheer.



# Stop waiting. The clear winner is here.



A demanding competition, thousands of judges...a clear winner. In its first head-to-head competition against the world's best, the Pro II Series earned top honors in both wide-format categories at the DIMA Digital Printer Shoot-Out. So when we introduced the advanced new Pro II EX Series, we knew we had a tough act to follow.

And what a follow-up. At the Digital Printing and Imaging Association's Product of the Year Competition, the EX Series came away with victories in multiple categories.

So if you've been thinking about investing in a wide-format inkjet but have been waiting for the "next big thing," your wait is over. Because the Pro II EX Series of inkjet printers and printer/cutters is not just the next step up, it's a major leap forward in Roland engineering. Piezo print heads, firmware, media movement, cleaning systems, and Roland's COLORIP™ software have all been carefully designed to provide printing performance like you've never seen...or imagined.

Every element of the Pro II EX Series is designed to work in harmony to achieve stunning color reproduction on both coated and uncoated media. The Pro II EX Series offers users an ideal combination of automation and user-selectable controls. You can achieve outstanding results with the touch of a button, or tweak to your heart's content.

So, now what are you waiting for?

The Pro II Series' multiple victories at the DIMA Digital Printer Shootout and DPI Product of the Year Competition continue a history of prestigious industry recognition of the Roland inkjet line, which includes multiple DPI Andre Schellenberg awards, Seybold Hot Pick, DPI Product of the Year, Graphic Design "Fall Forty", PEI Cool2 Award, 3D Design Magazine's Editor's Choice Award, and others. This recognition from our peers in the industry vividly demonstrates that when quality is the yardstick, time and again Roland is the winner by a mile.



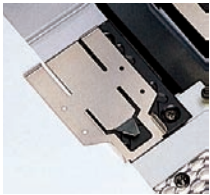
## The Pro II EX Series. Engineered for better day-in-day-out performance.

We have to admit it. Our engineers went a little overboard. The Pro II EX Series features well over 100 technical breakthroughs that combine to make them the best-engineered products in their class. Every feature contributes to better printing and improved productivity.

Here are just a few examples:

### Superior Media Handling.

What keeps your media from curling and buckling during printing? It's not gravity...or wishful thinking. It's engineering. The Pro II Series features a unique series of channels to supplement the vacuum bed air holes and provide greater and more evenly distributed suction. We've also provided wider feed rollers to reduce pressure on the media and added media clamps to prevent edge curl.



### Brilliant Printing on Uncoated Media.

SOLJET Pro II EX models feature advanced Eco-SOL INK and specially designed electronic systems that control internally mounted heating elements to deliver brilliant, photorealistic graphics on uncoated media that are water, scratch and UV resistant. The combination heralds a major breakthrough in profitable everyday production.

### More Brains.

Pro II printers feature 4 on-board CPUs. Each one of them is dedicated to specific tasks. One talks to the network card, another to the print heads, and the others control the ink cartridges and the motors. With all these CPUs minding their own business, things get done a lot faster.



### Digital Media Feed Control.

Differences in media thickness can subtly affect the feed rate, causing light or dark banding. The Pro II grit roller shaft features a digital servomotor and encoder to provide precision control of the media feed rate, resulting in artifact free printing.

### Precise Cutting Control.

When a print goes through lamination, the heat creates strain which can skew and distort the media. Our Pro II EX print/cut models are equipped with Roland's unique Quadralign™ 4-point optical registration system, which automatically realigns the cutting path after registration, compensating for distortion of the media and giving you a clean, accurate cut every time.

### Efficient Head Cleaning System.

Three separate cleaning stations for flushing, capping, and wiping provide faster printing and cleaner heads. Three sets of pumps eliminate ink waste and make head cleaning and changing inks much faster. Now, that's some clean engineering.

# AWARD-WINNING

**ROLAND INKS MAKE THE DIFFERENCE.** A key to the stunning color produced by the Pro II EX Series is the quality of Roland inks. Our advanced Eco-SOL INK is a highly affordable mild solvent ink with a chemistry that allows signmakers to print brilliant, durable graphics without special ventilation or environmental equipment. Roland pigment ink offers a combination of exceptionally bright color and UV stability. Ongoing independent tests indicate over 100 years indoor print permanence with Roland pigment ink. For vivid printing of short-term indoor materials, Roland dye-based inks produce lush, intense colors at a lower price. All inks come in sealed 220 ml ink cartridges for easy, no-mess handling.

## Precision Contour Cutting

This is where we really cut up the competition

Long before we set a new standard for large format print quality, Roland was the industry leader in developing state-of-the-art cutting technology. The SC-540 EX printer/cutter brings you the best of both worlds. Once an image has been printed, it can be automatically contour cut without having to reload or reposition the media. This combination of printing and cutting in a single device significantly improves production speed and ease.

With its digitally controlled servo motor and curve smoothing function, the SC-540 EX cuts elegant arcs and curves with incredible accuracy at speeds up to 24"/sec. Selectable blade force pressure between 20 and 300 grams allows the SC-540 EX to cut a wide variety of media. Blade values can also be adjusted manually for optimum results on various vinyl and specialty substrates.

The SC-540 EX makes quick work of contour cutting window signs, decals, labels, POP displays and packaging prototypes. Print and cut operations can be handled simultaneously from a variety of software applications including Adobe® Illustrator®, Adobe® PageMaker®, CorelDRAW®, and QuarkXPress™. Pro II EX printer/cutters can also function independently as a stand-alone vinyl cutter for sign or display production.

## Introducing Quadralign™

Our unique 4-point optical registration system

Should you need to laminate your work, Roland's unique Quadralign™ 4-point optical registration system allows you to remove a print, laminate and then reload it for perfect contour cutting. The Pro II EX realigns the cutting path and even compensates for skew and distortion.\*



Quadralign automatically generates cropmarks at the four corners.



After printing, you may remove the print, laminate and reload the media.



Cutting path is realigned by adjusting to the cropmark position changes.\*

\*A large amount of distortion or poor reloading may affect contour cutting results.

## VERSATILITY

Pedal-to-the-metal speed, stunning color, and it cuts on a dime. And we're not talking about the car.





## SOLJET Pro II EX 54", 64", 74" Solvent Inkjet Printers

If you're working on durable outdoor graphics, you should be printing on a SOLJET Pro II EX. Available in 54", 64" and 74" models, the SJ EX Series combines blazing production speed, photorealistic print quality, and the vibrant durability of mild solvent inks. Roland's low-volatility Eco-SOL INK requires no special ventilation or environmental equipment, yet provides exceptionally bright colors that are water and UV resistant for up to three years outdoors when used with Eco-SOL Media. These rugged, reliable printers have a unique, sign-quality print-mode developed especially for the printing of signs, banners, POP displays and vehicle graphics.



MODELS SJ-540 EX, SJ-640 EX, AND SJ-740 EX

## SOLJET Pro II EX 54" Solvent Inkjet Printer/Cutter

Fast becoming our most popular model, the SOLJET Pro II SC-540 EX adds Roland's renowned cutting technology to the high-performance printing features of the Pro II SJ EX. Our advanced Quadralign™ four-point optical registration system automatically realigns the cutting path after laminated media is reloaded and compensates for any skew and distortion. The SC-540 EX gives you the quality and versatility to produce indoor and outdoor banners, environmental graphics, contour-cut window signs, vehicle graphics, decals, packaging prototypes, signs, floor graphics, exhibits...and just about any other project under the sun.



MODEL SC-540 EX



# PRODUCTION

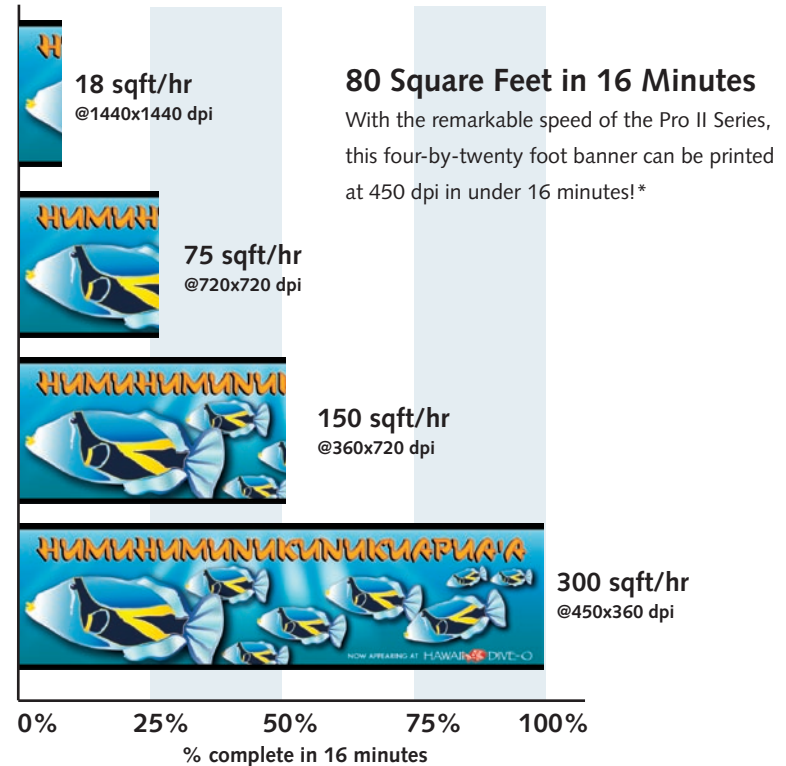
Print a twenty foot banner  
faster than you can say  
"Humuhumunukunukuapua'a."

## Hi-Fi JET Pro II 54" Inkjet Printer

The Hi-Fi JET Pro II combines precision Piezo print heads, superior media movement, and variable droplet technology to achieve startling print clarity and stunning color reproduction. The 54" FJ-540 offers users the choice of Roland pigment or dye-based inks. The crisp detail and high fidelity of true 1440 x 1440 resolution make them ideal for the production of fine art, photography, or mural-size graphics. Downy soft hairs, finely textured human skin...these are but a sample of the Hi-Fi JET Pro II's amazing ability to reproduce photographic quality.



MODEL FJ-540



\* Actual print speeds may differ depending upon media type.

# VELOCITY

Have you ever felt like you've been waiting all day for a print? You won't feel that way with the Pro II Series. Each model can print up to 300 sqft/hr at 450 dpi. But blazing print speed is only part of the story. The Pro II's remarkable production velocity is the result of over 100 individual technological enhancements. Six one-inch precision heads cover a larger print area while firing 360 nozzles per color. Multiple high-speed CPUs and a multitasking operating system reduce internal processing time. A built-in accelerated Ethernet print server doubles transmission speed to the main board. It all adds up to peak production speed with no waiting.



# Roland COLORIP.™ Think “zooom!”



Having a great printer is just the beginning. Pairing it with a capable RIP can make all the difference between frustration over lost time and breezing through jobs with ease. Designed especially for the Pro II series, Roland COLORIP (RCR) software provides simultaneous RIP and print capability, enhanced color management, and several unique layout options. In addition to Postscript applications, you can print directly from TIFF, PDF 1.4, JPEG, EPS, DCS 2.0 and PS files.

## Loaded with powerful features.

Built-in ICC profiles pre-calibrated for Roland ink and media make RCR the perfect partner for the Pro II line. At the same time, RCR gives users tremendous control over color. Separate color rendering intents (CRDs) can be applied to different elements of a PostScript document. You can apply perceptual, saturation, relative or absolute colorimetric CRDs to CMYK or RGB elements, as well as vector or bitmap elements.

RCR also features user-controlled spot color replacement for quick and precise control of custom colors without re-opening the original document. Colors can be subtly adjusted for more precise matching, or completely changed to any other color on the spectrum. Replacement colors can be defined by RGB, CMYK, Lab or individual ink channels, and an on-screen colorimeter instantly shows you how your replacement color fits within the selected color gamut. You can also organize your spot colors into an unlimited number of custom color databases. Imagine the savings of wasted time and prints.

Roland COLORIP for the Pro II. It rips.

# IMAGING

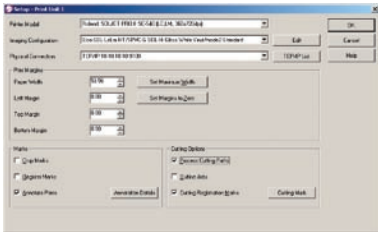
When it comes to quality printing, it's all about the droplets. Using both the newest generation of variable droplet Piezo print heads and a digital servo motor to control the media, the Pro II Series finely controls droplet placement in both the print head travel and paper feed directions to provide true 1440 x 1440 dpi resolution. The six print heads cover a large one-inch area and are designed in a precise in-line configuration for superior dot control. Variable droplet technology utilizes microscopic ink droplets of three different sizes depending on the type of output. This technology delivers truly breathtaking output with beautifully smooth and dot-free tones.





**Streamlined. Intuitive. Complete.**  
**Making all the right moves has never been easier.**

Setting up your printer and choosing your settings has never been easier. RCR's Imaging Configuration integrates all of the complex output settings such as ink type, print mode, media, and connections into one window. A single Master Queue window provides management of all RIP and Print jobs in a single dialog box, allowing you to drag and drop job files directly into the queue. In-depth online help guides you through every feature, task and function.



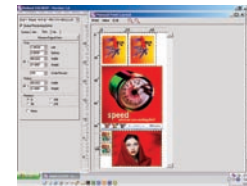
Single-screen Imaging Configuration



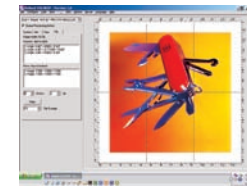
In-depth Online Help

**Powerful new layout features. More control than you've ever seen in a bundled RIP.**

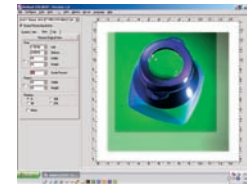
Powerful scaling, rotation, and layout features are an integral part of Roland COLORIP. You can tile a job automatically or manually, or crop an image right in the RIP to fit a specific size requirement. RCR lets you nest multiple jobs to maximize media usage, and automatic step and repeat allows you to efficiently layout multiple page documents. A label-printing feature allows you to attach notes including RIP settings to your work, creating more consistent results over multiple print runs.



Nesting



Tiling



Cropping



Spot Color Replacement

# FIDELITY

One of these American Beauties took weeks to create. The other took less than 7 minutes to print.



# SPECIFICATIONS

|                                      | FJ-Series<br>Model FJ-540  | SJ-Series<br>Models SJ-540 EX, SJ-640 EX, and SJ-740 EX  | SC-Series<br>Model SC-540 EX   |
|--------------------------------------|--|--|--|
| Printing technology                  | 6-color, Piezo inkjet  |  |  |
| Printing resolution                  | 450 x 360 / 360 x 720 / 720 x 720 / 720 x 1440 / 1080 x 1080 / 1440 x 1440 dpi selectable                    |  |  |
| Printing/cutting width               | 8-5/16" to 53-9/16"<br>(210 mm to 1361 mm)   | SJ-540 EX: 8-5/16" to 53-9/16" (210 mm to 1361 mm)<br>SJ-640 EX: 8-5/16" to 63-9/16" (210 mm to 1615 mm)<br>SJ-740 EX: 8-5/16" to 73-9/16" (210 mm to 1869 mm)   | 7-5/16" to 53-1/4"<br>(185 mm to 1346 mm)  |
| Acceptable media widths              | 8-5/16" to 54"<br>(210 mm to 1371 mm)  | SJ-540 EX: 8-5/16" to 54" (210 mm to 1371 mm)<br>SJ-640 EX: 8-5/16" to 64" (210 mm to 1625 mm)<br>SJ-740 EX: 8-5/16" to 74" (210 mm to 1879 mm)  | 7-5/16" to 54"<br>(185 mm to 1371 mm)  |
| Ink types/colors                     | Pigment: CMYK + Lc, Lm / CMYK + O, G<br>Dye: CMYK + Lc, Lm   | Eco-SOL INK: CMYK + Lc, Lm   | Eco-SOL INK: CMYK + Lc, Lm   |
| Ink capacity                         | Twelve 220 ml ink cartridges (440 ml [2 x 220 ml ± 5 ml] per color)  |  |  |
| Cutting speed                        | —  | —  | .394" to 23.622"/s<br>(394" to 11.81"/s in media feed direction)                 |
| Cutting force/offset                 | —  | —  | 30 to 300 gf / 0 - 1.5 mm  |
| Cutting distance accuracy            | —  | —  | Error of less than ±0.4% of distance traveled,<br>or .012", whichever is greater |
| Media handling                       | Auto roll feed mechanism, auto sheet cutter, media take-up system (optional)                                 |  |  |
| Head cleaning                        | Automatic and manual built-in cleaning system  |  |  |
| Interface                            | Bi-direction Parallel (IEEE1284:nibble mode, ECP mode (non compression) and Ethernet 10Base-T or 100Base-TX) |  |  |
| Dimensions with stand<br>(W x H x D) | 106-5/16" x 51-3/16" x 29-1/4"<br>(2699 mm x 1300 mm x 742 mm)   | SJ-540 EX: 106-5/16" x 51-3/16" x 29-1/4" (2699 mm x 1300 mm x 742 mm)<br>SJ-640 EX: 116-5/16" x 51-3/16" x 29-1/4" (2953 mm x 1300 mm x 742 mm)<br>SJ-740 EX: 123-7/16" x 51-3/16" x 29-1/4" (3134 mm x 1300 mm x 742 mm) | 106-5/16" x 51-3/16" x 29-1/4"<br>(2699 mm x 1300 mm x 742 mm)                   |
| Weight with stand                    | 321.8 lb (146 kg)  | SJ-540 EX: 332.9 lb (151 kg) SJ-640 EX: 385.4 lb (175 kg)<br>SJ-740 EX: 394.6 lb (179 kg)  | 346.1 lb (157 kg)  |

Specifications subject to change.



**Built with precision. Backed with passion.**



Roland DGA Corporation | 15363 Barranca Parkway | Irvine, California 92618-2216 | 800.542.2307 | 949.727.2100 | 949.727.2112 fax | www.rolanddga.com

Certified ISO 9001:2000

RDGA-PRO2-02